



**GWM**



**H6**

# Who is GWM?

**Built for the world, by the world.**

GWM is a world-renowned vehicle manufacturer and the parent company of Haval.

At GWM, everything we do is grounded in our corporate philosophy: 'improving little by little, every day.' From building world-class research and development systems, which enable continuous innovation, to following the 'excessive investment' principle, which drives industry leadership, we relentlessly put our philosophy into practice.

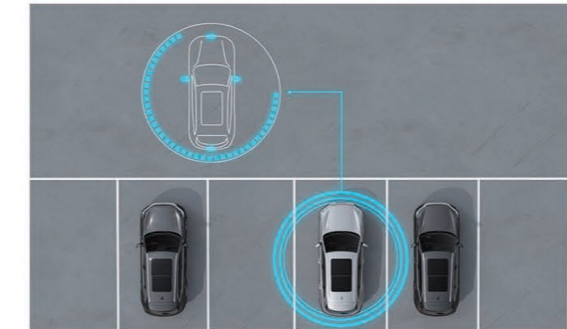
Haval is a global SUV specialist and part of the rapidly-growing GWM group. We are proud to make vehicles that combine the best components, technology and safety features from around the world. With over 6 million sales to date in more than 60 countries (and counting), we are the No.1 SUV brand in the world's largest market and have been for the past 15 years. We attribute our success to passion, drive and a commitment to listening to our customers.





# Intelligent Protection, from every angle

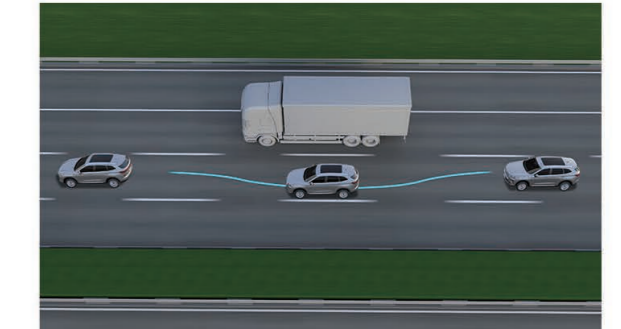
Intelligent technology, active and passive safety protection, front and side monitoring provide worry-free travel.



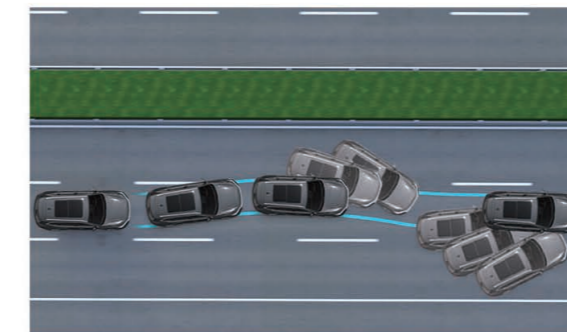
360 Degree Camera - Standard on Lux and Ultra



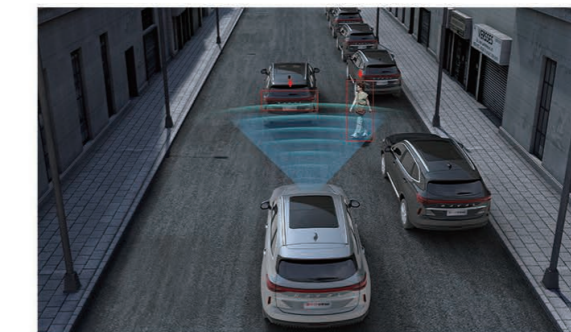
Autonomous Parking - Standard on Ultra



Intelligent Dodge - Standard on Ultra



Electronic Stability Programme (ESP) - Standard on all models



Automatic Emergency Braking (AEB) - Standard on all models

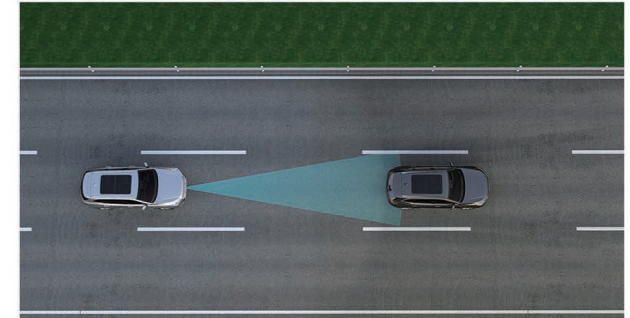


High-strength Steel Body



# Intelligent Mobility

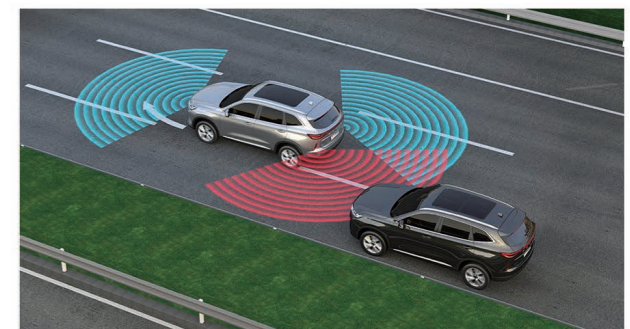
Intelligent safety functions covering 360-degrees of your new H6 make every drive easy and enjoyable.



ACC (Adaptive Cruise Control) + ICA (Intelligent Cruise Assistance) + TJA (Traffic Jam Assistance)



TSR (Traffic Sign Recognition)



LKA (Lane Keep Assist)

# Surrounded by Comfort

Tech comes to you to make every drive seamless and comfortable for you and your passengers, everywhere you go.



Digital Instrument Panel



Heated Seats - Standard on Lux and Ultra



10.25 inch Full-colour Touch Screen on Premium and Lux. 12.3 inch on Ultra



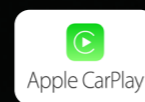
LED Dash Lighting



Panoramic Sunroof - Ultra Only



8-way Electric Adjustable Driver's Seat - Standard on Lux and Ultra

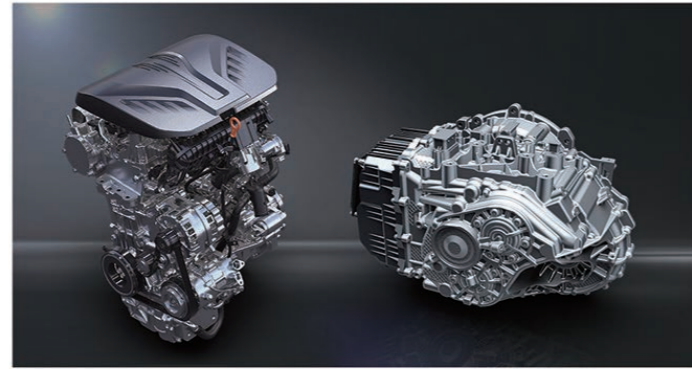


# Turbo Power, SUV Comfort

The new 2.0 litre turbo petrol engine packs a punch, delivering performance when and where you need it.

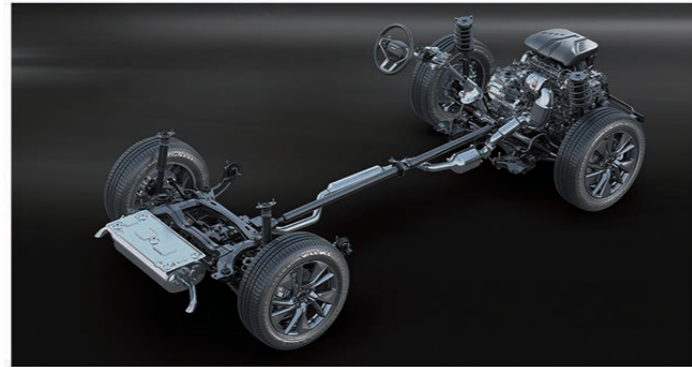
The second generation 7-speed Dual Clutch Transmission improves throttle response timing, and increases efficiency to provide crisp gear shifts and a more direct drive feel.

The intelligent 4WD System can redistribute torque between front and rear axles within just 110ms and to a ratio of up to 50/50 to ensure grip in even the most challenging conditions.



2.0GDIT Petrol

7DCT



Front Macpherson Rear Multi-link Independent Suspension + AWD





# H6 Hybrid

Smart from the Start.

The H6 Hybrid features the 1.5T 4G15H Hybrid engine combined with the Dedicated Hybrid Transmission to provide both high-efficiency and high-performance with a combined output of 179 kW, 530 Nm of torque and an average fuel consumption of 5.2L/100km.

GWM Dedicated Hybrid Technology (DHT) is a core technology route in GWM's electrification roadmap which provides both high-efficiency and high-performance at the same time. DHT is aimed to provide solutions for both urban driving and interstate long distance driving.



# H6 Hybrid

Enjoy smooth and responsive performance when you need it, all while intelligently saving on fuel. Backed with high-level safety, the H6 Hybrid is smart from the start.



H6 Hybrid exclusive mesh front grille



H6 HEV Badge



Dual center break lights



H6 Hybrid exclusive side trims



Hybrid exclusive Crayon Grey exterior colour







# Tailor-Made, just for you

From the front to the back, the top to the bottom, every inch of the new H6 has been meticulously thought out. Whether you're ducking out to the shops, or on a road-trip, your best accessory will always be with you.



Bold styling



Agressive Front Grill



Sleek waist lines



Vivid body proportions



LED Headlights



LED Tail Lights



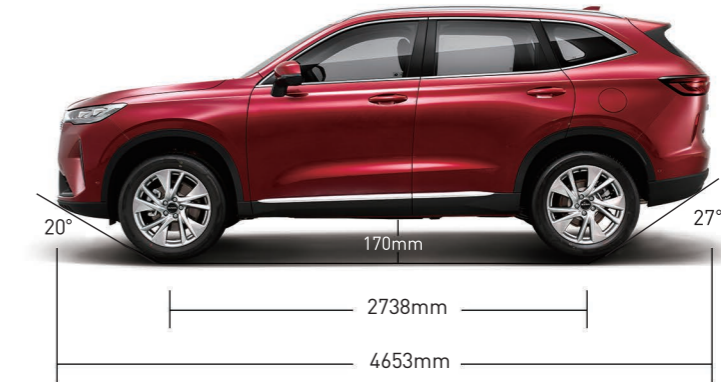
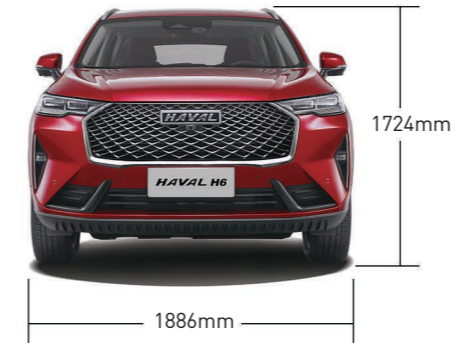
19-inch Vortex Alloy Wheels - Standard on Ultra



18-inch Astrolabe Alloy Wheels - Standard on Premium and Lux



## Dimensions



## Wheels



18-inch Alloy Wheels



19-inch Alloy Wheels

## Colours



Ayers Grey



Burgundy Red



Hamilton White



Crayon Grey (Hybrid Exclusive)



Energy Green



Blue Sapphire



Golden Black



Black Interior

\*Metallic paint. Please check pricing with your Haval dealer.

# Specifications

DIMENSIONS - ENGINE - TRANSMISSION	PREMIUM	LUX	ULTRA	ULTRA HYBRID
Length/Width/Height (mm)	4653 x 1886 x 1724			
Wheelbase (mm)	2738			
Engine	2.0 - litre Turbocharged			1.5T Hybrid
Fuel Type	Petrol			Petrol
Displacement (cm³)	1998			1499
Max Power (Kw @ rpm)	150 @ 6000-6300			179
Max Torque (Nm @ rpm)	320 @ 1500-4000			530
2WD	●	●	●	●
4WD	x	x	●	x
7 - speed Dual Clutch Transmission	●	●	●	x
Dedicated Hybrid Transmission	x	x	x	●
Fuel Consumption - Combined litres/100km	2WD - 7.4L 4WD - 8.3L			5.2L
Towing capacity - with trailer brakes (kg)	2,000			1,500
Towing capacity - without trailer brakes (kg)	750			750

CHASSIS & STEERING	PREMIUM	LUX	ULTRA	ULTRA HYBRID
Electric Shift Program	●	●	●	●
Electric Park Brake with Auto Hold	●	●	●	●
Front Ventilated Disc / Rear Disc Brakes	●	●	●	●
Driving Modes - Two-Wheel Drive (Normal/Eco/Sport/Snow)	●	●	x	●
Driving Modes - Four-Wheel Drive - Standard Driving Modes + All Terrain Response System	x	x	●	x
Intelligent Stop-Start	●	●	●	x
R18 Alloy Wheel	●	●	x	x
R19 Alloy Wheel	x	x	●	●
Spare Tyre T135 / 90R17	●	●	●	Tyre repair kit

EXTERIOR	PREMIUM	LUX	ULTRA	ULTRA HYBRID
Electric Tail Gate with Delayed Closing & Memory Function	x	x	●	●
Automatic Windscreen Wipers	●	●	●	●
Rear Windscreen Wiper	●	●	●	●
Roof Rails	x	●	●	●
Panoramic Sunroof	x	x	●	●
Shark Fin Aerial	●	●	●	●

INTERIOR	PREMIUM	LUX	ULTRA	ULTRA HYBRID
Multi - Function Steering Wheel	●	●	●	●
PU Steering Wheel	●	x	x	x
Leather Steering Wheel	x	●	●	●
Heated Steering Wheel	x	x	●	●
Paddle Shifter	●	●	●	x
4 - Way Manually Adjustable Steering Wheel	●	●	●	●
Stainless Steel Threshold (Front Door Only)	x	x	●	●
Sun-Visor with Vanity Mirror	●	x	x	x
Sun-Visor with Vanity Mirror and Light	x	●	●	●
Wireless Charging	x	x	●	●
Front 12V Power	●	●	●	●
Luggage Cabin 12V Power	x	x	●	●

SEATS	PREMIUM	LUX	ULTRA	ULTRA HYBRID
Cloth Seat Trim	●	x	x	x
Comfort-Tek Leather Seat Trim	x	●	●	●
6 - Way Manual Adjustable Driver Seat	●	x	x	x
8 - Way Electric Adjustable Driver Seat with Lumbar Support	x	●	●	●
4- Way Manual Adjustable Front Passenger Seat	●	●	x	x
4- Way Electric Adjustable Front Passenger Seat	x	x	●	●
Front Heated Seats	x	●	●	●
Front Ventilated Seats	x	x	●	●
Rear Seats 60/40 Split	●	●	●	●

ACTIVE AND PASSIVE SAFETY	PREMIUM	LUX	ULTRA	ULTRA HYBRID
Dual SRS Airbags	●	●	●	●
Front Side Airbags	●	●	●	●
Centre Airbag	●	●	●	●
Curtain Airbags	●	●	●	●
Front Seatbelts with Pre-Tensioner (Two sides)	●	●	●	●
Seatbelts with Pre-Tensioner (Rear Seats)	●	●	●	●
Child Safety Lock	●	●	●	●
ESP (Electronic Stability Programme)	●	●	●	●
TCS (Traction Control System)	●	●	●	●
CBC (Cornering Brake Control)	●	●	●	●
RMI (Roll Movement Intervention)	●	●	●	●
BA (Brake Assist)	●	●	●	●
HDC (Hill Descent Control)	●	●	●	●
HHC (Hill-Start Assist Control)	●	●	●	●
BOS (Brake Override System)	●	●	●	●
TPMS (Tyre Pressure Management System)	●	●	●	●
DVR USB Port	x	●	●	●
Front Parking Assist	x	●	●	●
Rear Parking Assist	●	●	●	●
RVC (Rear View Camera)	●	x	x	x
360 Degree Monitoring System	x	●	●	●
Auto Parking Assist	x	x	●	●
ACC (Adaptive Cruise Control) with Stop and Go	●	●	●	●
Intelligent Cornering Control	●	●	●	●
Intelligent Dodge	x	x	●	●
ELK (Emergency Lane Keep)	●	●	●	●
RCTA (Rear Crossing Traffic Alert)	x	x	●	●
RCTB (Rear Crossing Traffic Braking)	x	x	●	●

● STANDARD X NOT AVAILABLE

ACTIVE AND PASSIVE SAFETY (CONT.)	PREMIUM	LUX	ULTRA	ULTRA HYBRID
FCW (Forward Collision Warning)	●	●	●	●
LDW (Lane Departure Warning)	●	●	●	●
LKA (Lane Keeping Assist)	●	●	●	●
LCK (Lane Centre Keeping)	●	●	●	●
AEB (Automatic Emergency Braking) Pedestrian, Bicycle & Crossroads	●	●	●	●
TSR (Traffic Sign Recognition)	●	●	●	●
Blind Spot Detection + Lane Change Assist	●	●	●	●
RCW (Rear Collision Warning)	●	●	●	●
DOW (Door Open Warning)	●	●	●	●
TJA (Traffic Jam Assist)	●	●	●	●
ICA (Intelligent Cruise Assistance)	●	●	●	●
Driver Drowsiness Detection	●	●	●	●
ISOFIX	●	●	●	●
SECURITY	PREMIUM	LUX	ULTRA	ULTRA HYBRID
Keyless Entry System	●	●	●	●
Push Button Start	●	●	●	●
Anti-theft Immobiliser	●	●	●	●
Burglar Alarm	●	●	●	●
ENTERTAINMENT	PREMIUM	LUX	ULTRA	ULTRA HYBRID
10.25 inch Full Colour Instrument Cluster	●	●	●	●
Radio FM / AM	●	●	●	●
Bluetooth Hands Free Link System	●	●	●	●
10.25 inch Full Colour Touch Screen Infotainment System	●	●	x	x
12.3 inch Full Colour Touch Screen Infotainment System	x	x	●	●
Front USB with Charge & Data Transmission	●	●	●	●
Rear USB with Charge	●	●	●	●
6 Speakers + DTS	●	x	x	x
8 Speakers + DTS	x	●	●	●
Apple CarPlay™ <sup>[A]</sup>	●	●	●	●
Android Auto™ <sup>[B]</sup>	●	●	●	●
HUD (Heads Up Display)	x	x	●	●

\*Metallic paint. Please check pricing with your HAVAL dealer.

[A] Apple CarPlay™ connectivity requires compatible iOS device. See [apple.com.au](http://apple.com.au) for more details. Apple CarPlay™ is a registered trademark of Apple Inc.  
[B] Android Auto™ connectivity requires compatible Android device. See [android.com/intl/en\\_au/](http://android.com/intl/en_au/) for more details. Android Auto™ is a trademark of Google Inc.



GLASS	PREMIUM	LUX	ULTRA	ULTRA HYBRID
Green Glass	●	x	x	x
Rear Privacy Glass	x	●	●	●
Anti-Glare Rear View Mirror - Manual	●	x	x	x
Anti-Glare Rear View Mirror - Automatic	x	●	●	●
Driver Window + One Touch Up & Down + Anti-Pinch	●	●	●	●
Four Window + One Touch Up & Down + Anti-Pinch	x	●	●	●
Key Fob Window Close Function	x	●	●	●
Heated Door Mirrors	x	x	●	●
Power Adjustable Door Mirrors + Manual Folding + Indicator	●	x	x	x
Power Adjustable Door Mirrors + Electric Folding + Indicator	x	●	●	●
Auto Foldable Rear View Mirror Locking	x	●	●	●
LIGHTING	PREMIUM	LUX	ULTRA	ULTRA HYBRID
LED Headlights	●	●	●	●
LED Tail Lights	●	●	●	●
Automatic Headlights + "Follow Me Home" Function	●	●	●	●
LED Front Fog Lights	x	●	●	●
Fog Lights with Assist Lighting Function	x	●	●	●
LED Rear Fog Lights	●	●	●	●
DRL (Daytime Running Lights)	●	●	●	●
Mood Lighting (Single Colour)	x	x	●	●
AIR CONDITIONING	PREMIUM	LUX	ULTRA	ULTRA HYBRID
Single-Zone Automatic Air Conditioning	●	x	x	x
Dual-Zone Automatic Air Conditioning	x	●	●	●
Air Outlet to Second Row	●	●	●	●

● STANDARD X NOT AVAILABLE



For more information visit [gwmhaval.com.au](http://gwmhaval.com.au) or [gwmhaval.co.nz](http://gwmhaval.co.nz).

GWM Haval Australia and New Zealand reserve the right to alter vehicle specifications and equipment levels without notice. Some equipment featured on the cars in this brochure may not be available in Australia and New Zealand or may be optional. To the extent permitted by law, GWM Haval Australia and New Zealand shall be liable to any person as a result of reliance on the content of the brochure.

Always check with your local GWM Haval Dealer for the latest product specifications.

Information in this brochure is current as at 01/09/2022.

Edition Code: ANZ 01-09-2022/01