



X-TRAIL





All-new Nissan X-TRAIL with e-POWER. Fit in more family adventure

Introducing Nissan's latest family adventure SUV, powered by either e-POWER* (a unique technology that goes beyond traditional hybrid technology for a smooth and quiet EV-like driving experience) or a traditional and efficient 2.5L petrol engine.

For superior control and a unique electrified experience, choose e-POWER* which includes the new electric-drive four-wheel-control technology, e-4ORCE*.

All-new X-TRAIL is a spacious SUV with up to seven seats[^], and everything you need to keep your family safe and comfortable with advanced Nissan Intelligent Mobility safety technologies. With cutting-edge connectivity to keep everyone entertained, the all-new X-TRAIL makes family friendly adventures a breeze.

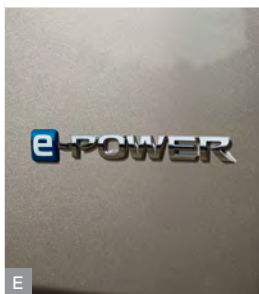


* Available on ST-L & Ti-L e-POWER models only.

[^] Available on ST & ST-L 4x4 models only.

Never compromise on style in the all-new Nissan X-TRAIL

Get noticed wherever you go with sleek LED headlights, distinctive and imposing front air vents and robust, yet crafted lines. Up front, the unmistakable Nissan V-motion grille bears the familiar signature of Nissan's exciting design DNA, to show that this electrified family crossover refuses to blend into the background.



A

20" alloy wheels[^]

B

Rear LED signature lamps

C

Strong front fascia

D

Front LED signature headlamps

E

e-POWER badge^{*}

F

e-4ORCE badge^{*}

[^] Available on Ti-L e-POWER only.

^{*} Available on e-POWER models only.



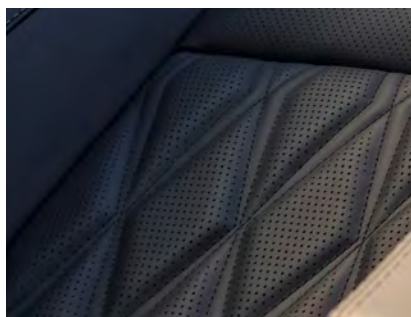


Close the door on the chaos outside

With three large interior display screens* to supplement your drive, you're guaranteed to experience Nissan technology at its best.

Enjoy a 12.3" TFT Advanced Drive-Assist® Display instrument cluster*, 12.3" touchscreen display* with satellite navigation* and a 10.8" Head-Up Display* as you settle into your comfortable, premium quilted Nappa leather-accented+ seats.

Wondering where to place your belongings? Don't miss the storage space beneath the floating centre console. Inside the X-TRAIL's cabin, it's all about quality details – the relaxing atmosphere of ambient lighting*, the soft feel of premium materials and the seamless convenience of wireless Apple CarPlay^ and wireless smartphone charging°.



Nappa leather-accented+ seats



Ambient door trim lighting on Ti-L



12.3" TFT Advanced Drive-Assist® Display instrument cluster* and 10.8" Head-Up Display*



12.3" touchscreen display* with wireless Apple CarPlay^



Satellite navigation*



Wireless smartphone charging°

* Available on Ti-L model only.

+Leather-accented features and upholstery may contain synthetic material. Minor trim variations may occur from time to time. Available on Ti-L models only.

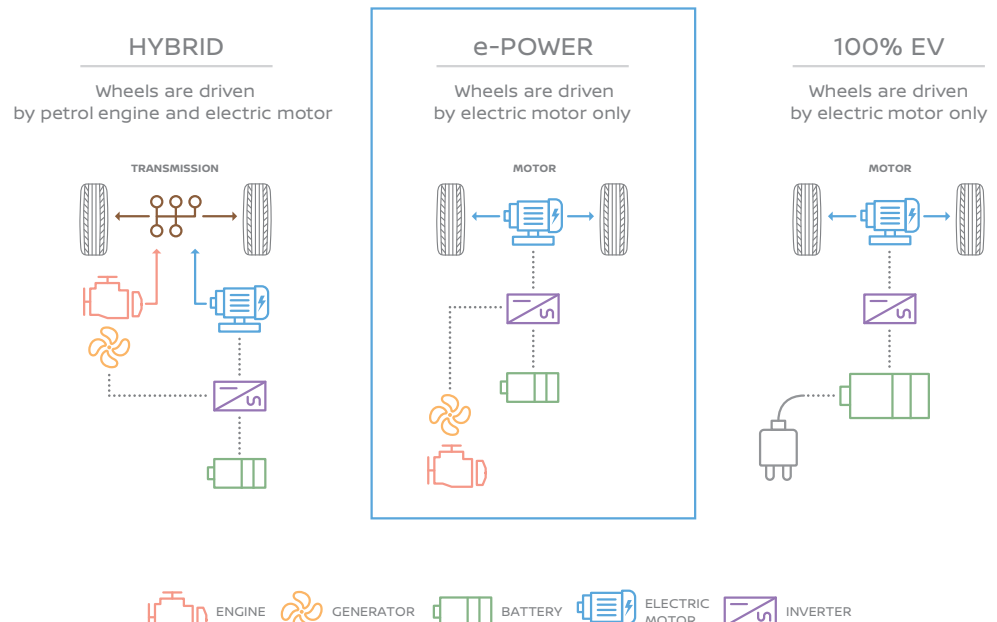
^ CarPlay is a registered trademark of Apple Inc. Compatible device required. Wired connections require a USB connection. Wireless CarPlay® available on Ti-L model only.°

° Compatible device required. Available on Ti-L model only.



The unique electrified experience, now unplugged. This is e-POWER*

With e-POWER*, pioneering doesn't have to pause. e-POWER* is a innovative EV based system which includes two electric motors, a petrol engine and a lithium-ion battery to achieve an EV-like driving experience. The result is almost instant acceleration response and a driving sensation without the need to plug in or recharge. Just exhilarating and stress-free driving with no compromise on fuel economy.



Simplify your drive with e-Pedal Step^

Experience a more intuitive way to drive. Unique to Nissan, e-Pedal Step[^] gives you the option to accelerate and decelerate effectively with just the accelerator pedal at speeds above 10km/h, leaving the brake pedal for harder braking or coming to a complete stop.

* e-POWER is available on ST-L & Ti-L models only.

[^] e-Pedal Step may not be suitable under all driving conditions, correct operation is the responsibility of the driver.
Available on e-POWER models only.

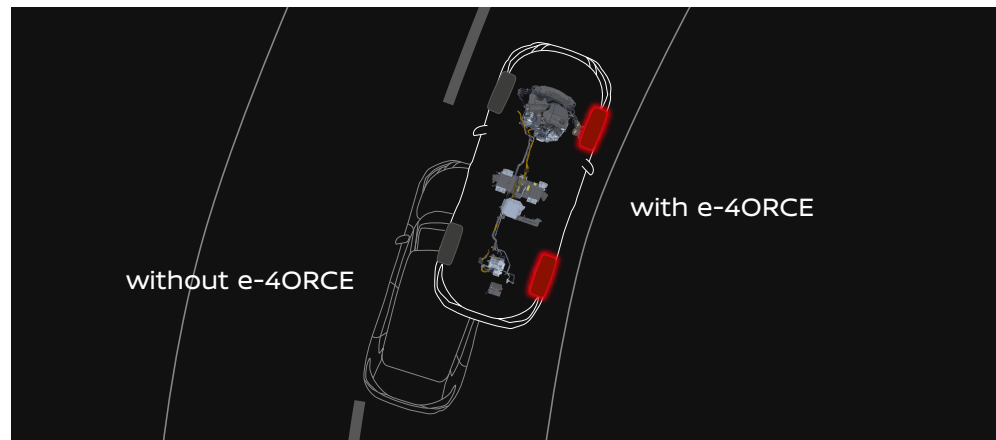
Electrify your 4x4 experience with e-4ORCE*

Playgrounds are not meant to have boundaries. Take on new terrains in confidence with Nissan X-TRAIL's electric-drive four-wheel-control technology, e-4ORCE. e-4ORCE* delivers the perfect balance between powerful and unprecedented control, with a smooth ride for all thanks to superior handling on any surface. Dial up the adventure even further with up to five selectable drive and terrain modes[^], including Auto, Sport, Eco, Off-Road and Snow.

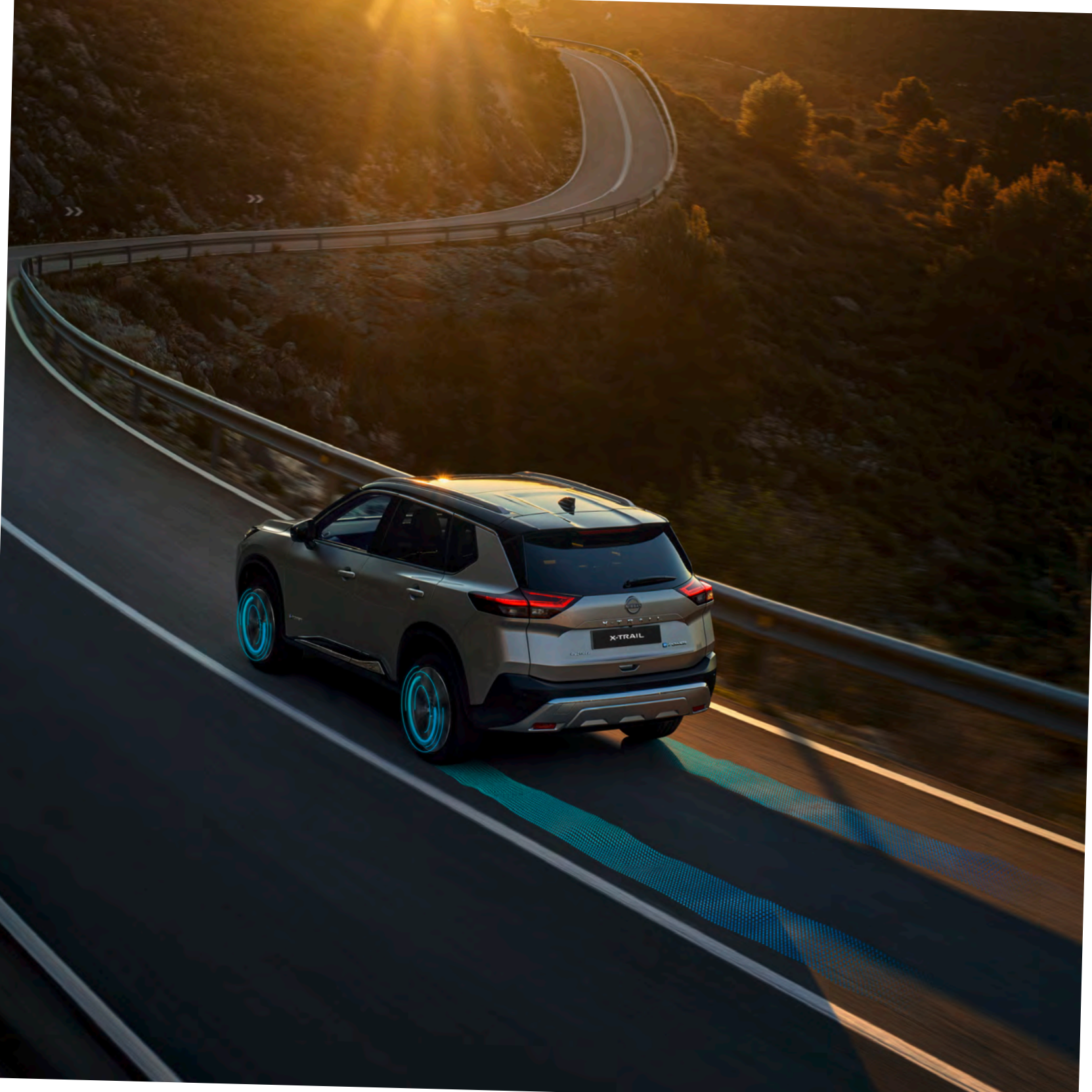
e-4ORCE* is paired with e-POWER and available on ST-L & Ti-L models.



Five selectable drive and terrain modes[^]



* e-4ORCE is available on ST-L & Ti-L e-POWER models only.
[^] 4x4 models only.







2.5L petrol engine offering excitement and efficiency, without compromise

The all-new X-TRAIL will be offered with a 2.5L four cylinder petrol engine with 135kW of power and 244Nm of torque. Available in standard front-wheel-drive or Intelligent 4x4*, all models are fitted with a Continuously Variable Transmission along with steering wheel mounted paddle shifters to enhance your driving experience. X-TRAIL 2.5L models are now even more capable with maximum braked towing capacity† increasing to 2,000kg.

* Available on 4x4 models only.

† Towing capacity is subject to towbar/towball capacity and is based on the fitment of a Genuine Nissan towbar. Towing capacity figure described is a maximum figure. Actual towing capacity depends on the laden mass of the vehicle, driving conditions, fitment of any accessories or towing equipment limitations including the maximum towball download.

Safety at heart

The all-new Nissan X-TRAIL is equipped with advanced Nissan Intelligent Mobility technologies that combine to help you see more, sense more and can even step in to respond to potential hazards.

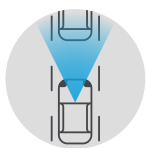
ProPILOT^Δ allows you to enjoy your highway commute by automatically keeping up with traffic flow and helping keep you centred in your lane through a combination of automated steering, acceleration and braking. This intelligent safety technology helps ease driver workload in highway traffic and long commutes at the push of a button.

Intelligent Around View[®] Monitor with Moving Object Detection^{*Δ} provides all-round reassurance from a 360 degree view of your car with four cameras mounted around the vehicle to provide front, rear and kerbside views.



INTELLIGENT FORWARD COLLISION WARNING^Δ

Keeps an eye on up to two vehicles ahead of X-TRAIL. If the system detects sudden deceleration ahead, it will give you audible and visual warnings to respond and slow down.



INTELLIGENT EMERGENCY BRAKING^Δ

By monitoring speed and distance between X-TRAIL and the vehicle ahead, Intelligent Emergency Braking^Δ can automatically engage the brakes to help avoid a frontal collision or lessen the severity of an impact. And when it detects a pedestrian at the crosswalk, it can stop you in your tracks. The technology also features cyclist and junction detection for added piece of mind.



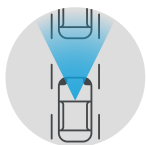
INTELLIGENT REAR AUTOMATIC BRAKING^Δ

Helps you back-up with confidence by watching behind you during reversing manoeuvres. If a large stationary object is detected behind your vehicle, the system can automatically engage the brakes to help avoid a rear collision or lessen the severity of an impact.



INTELLIGENT CRUISE CONTROL^Δ

Keeps a set distance between X-TRAIL and the vehicle ahead by measuring space and controlling acceleration and deceleration to automatically maintain a suitable following distance within your set speed.



INTELLIGENT LANE INTERVENTION^Δ

Avoid unintentional lane departure. When lane markings are clear, Intelligent Lane Intervention^Δ can keep you centred in your lane and can tap the brakes to help gently guide you back

^{*} Not available on ST.

^Δ ProPILOT cannot prevent collisions. It is the driver's responsibility to be in control of the vehicle at all times. Always monitor traffic conditions and keep both hands on the steering wheel. System operates only when lane markings are detected. Does not function in all weather, traffic and road conditions. System has limited control capability and the driver may need to steer, brake or accelerate at any time to maintain safety. See Owner's Manual for safety information. Not available on ST.

^Δ Driver's aid(s) only, not a substitute for safe driving. Always monitor your surroundings.





Discover the details that make a difference

Details designed to make your journeys smoother. The all-new X-TRAIL is available with tri-zone climate control* for optimal cabin comfort, along with built-in rear door sunshades^ that neatly roll away.

When it comes to cargo, five-seat models feature Nissan's Divide-N-Hide® configurable cargo system~, a system of adaptable boards to contain items of various shapes and sizes. Smaller items can be retained in the new under-shifter storage, or the butterfly opening centre console for easy access for second row passengers.



Floating centre console with under-shifter storage



Butterfly opening centre console



ISOFIX compatible second row outboard seats



Built-in rear door sunshades^



Second row USB charging ports

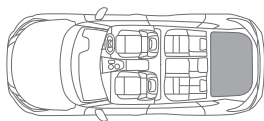


Tri-zone climate control*

* Available on Ti-L model only.

^ Available on Ti-L models only.

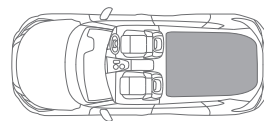
~ ST-L FWD (5-seat) & Ti-L models only.



Cargo capacity: second row upright, to roof line.

e-POWER
5-seat 575L

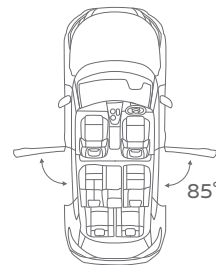
2.5L petrol
5-seat 585L
7-seat 465L



Cargo capacity: second (and third) rows folded flat, to roof line.

e-POWER
5-seat 1,396L

2.5L petrol
5-seat 1,396L
7-seat 1,298L



85° rear door opening



ST



Specification:

- Intelligent Emergency Braking with junction assist & pedestrian/cyclist detection
- Intelligent Rear Automatic Braking
- Intelligent Blind Spot Intervention
- Intelligent Lane Intervention
- Intelligent Cruise Control
- Rear view camera & rear parking sensors
- Rear Seat Alert
- Traffic Sign Recognition
- High Beam Assist
- 7.0" TFT Advanced Drive-Assist® Display instrument cluster
- 8.0" touchscreen display
- Apple CarPlay®^ & Android Auto™^
- 4 USB ports (2A + 2C)
- 17" alloy wheels
- LED head and tail lights
- Electronic shift by wire
- Electric park brake
- Steering wheel mounted paddle shifters
- Power adjustable, power folding, heated door mirrors

Optional features

- Intelligent 4x4 with 5 drive and terrain modes
- 7-seat capacity (4x4 models only)

^ CarPlay is a registered trademark of Apple Inc. Android Auto is a trademark of Google LLC. Compatible device required. Wired connections require a USB connection.

ST-L



ST-L includes ST features plus/or:

- ProPILOT^Δ
- Intelligent Around View[®] Monitor with Moving Object Detection
- Leather-accented* seat trim
- Leather-accented* steering wheel
- 18" alloy wheels
- Tyre Pressure Monitoring System
- Dual-zone climate control
- Privacy glass (second row & rear windows)
- Front parking sensors
- Automatic dimming internal rear view mirror
- 10-way power adjustable driver seat
- Divide-N-Hide[®] configurable cargo system (5-seat only)
- 40/20/40 split folding second row seat
- Sliding second row seats
- Heated front seats

Optional features

- Intelligent 4x4 with 5 drive and terrain modes
- 7-seat capacity (4x4 models only)

^Δ ProPILOT cannot prevent collisions. It is the driver's responsibility to be in control of the vehicle at all times. Always monitor traffic conditions and keep both hands on the steering wheel. System operates only when lane markings are detected. Does not function in all weather, traffic and road conditions. System has limited control capability and the driver may need to steer, brake or accelerate at any time to maintain safety. See Owner's Manual for safety information.

* Leather-accented features and upholstery may contain synthetic material. Minor trim variations may occur from time to time.

Ti-L



2.5L model shown

Ti-L includes ST-L features plus/or:

- Quilted Nappa leather-accented*
- Bose® 10 speaker premium audio system
- Built-in rear door sunshades
- Remote engine start
- Motion sensing power tailgate
- Heated steering wheel
- Heated second row outboard seats
- Ambient interior lighting (console tray & door trim)
- Memory system (driver seat & door mirrors)
- External rear vision mirrors with tilt to reverse

e-POWER only

- 20" alloy wheels

Optional features

- Two-tone black painted roof#
- e-POWER with e-4ORCE
- Tan quilted Nappa leather-accented* seat trim

* Leather-accented features and upholstery may contain synthetic material. Minor trim variations may occur from time to time.

CHOOSE YOUR EXTERIOR PAINT COLOUR

SINGLE TONE COLOURS



Sunset Orange



Ivory Pearl



Brilliant Silver



Ceramic Grey



Gun Metallic



Diamond Black



Champagne Silver



Scarlet Ember



Caspian Blue

TWO TONE COLOURS



Ivory Pearl with
black roof~



Ceramic Grey with
black roof~



Champagne Silver with
black roof~



Caspian Blue with
black roof~



Sunset Orange with
black roof~

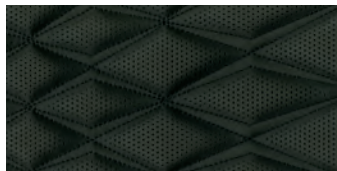
CHOOSE YOUR INTERIOR TRIM



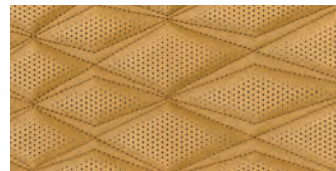
Grey cloth seat trim.
Available on ST.



Black synthetic leather seat trim.
Available on ST-L.



Black quilted Nappa leather-accented*
seat trim. Available on Ti-L.



Tan quilted Nappa leather-accented*
seat trim. Available on Ti-L.

~Two tone paint option available on ST-L & Ti-L models at additional cost.

* Leather-accented features and upholstery may contain synthetic material. Minor trim variations may occur from time to time. Leather-accented seat trim applies to first & second rows only. Nissan has taken care to ensure that the colour swatches presented here are the closest possible representations of actual vehicle colours. Swatches may vary slightly due to the printing process and whether viewed in daylight, fluorescent or incandescent light. Please see the actual colours at your local Nissan Dealer.



Nissan Intelligent Mobility guides everything we do. At Nissan, we use new technologies to transform cars from mere transportation. Together the journey is more confident, connected, and exciting. Whether it is cars that share the task of driving or highways that charge your EV as you go along, it's all in the very near future. And it's a future already taking shape in the Nissan you drive today.



NissanNZ



nissan_nz



@NissanNZ



@NZNissan

nissan.co.nz